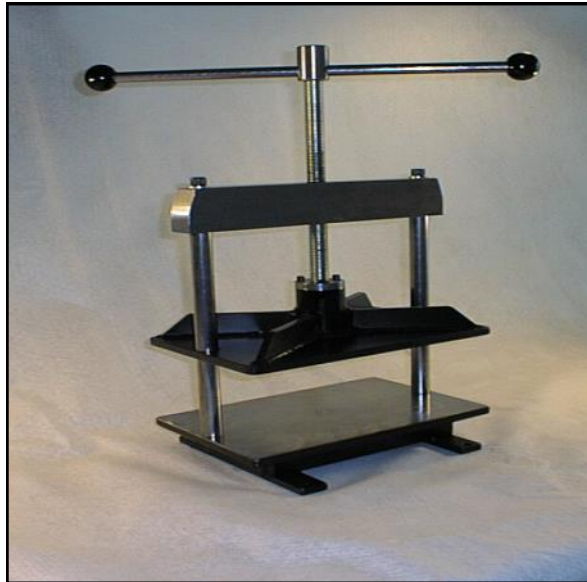


Assembly Instructions for Relief Press



Congratulations on your new Norup press from TofKo.
Please note that the press has been assembled and tested before
leaving our factory, but due to transport your press is only partly
assembled on delivery.
This manual gives an instruction of how to assemble the press.

We hope you will enjoy working with your new press!

Relief Press
No.

For the assembly of the Relief Press you need:

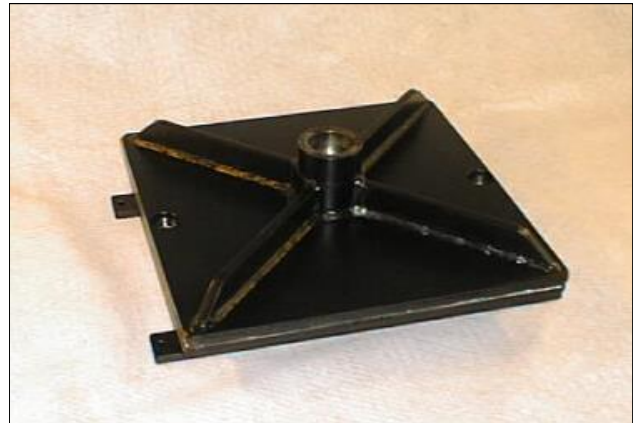
- 1 hammer
- 1 M10 Allen key
- 1 M5 Allen key



1.
Check the contents of the cardboard box:

- 2 pcs bedplates
- 1 pcs upper part
- 2 pcs M10 Allen screws
- 3 pcs M5 Allen screws
- 2 pcs washers
- 1 pcs handle with a ball
- 1 pcs ball for the handle

2.
Place one bedplate on top of the other and make sure that the holes of the upper and lower bedplate match up.

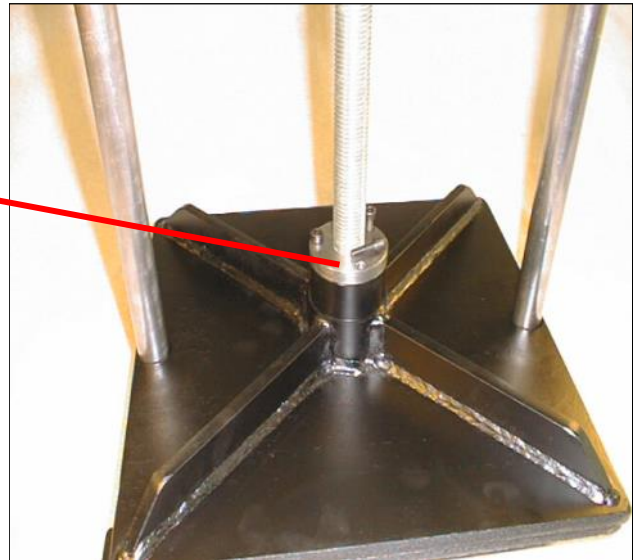


3.
Place the rods of the upper part in the holes of the bedplates.



- 4.** Place the two washers on the two M10 Allen screws and fasten the rods from the bottom with the M10 Allen key.

- 5.** Screw the spindle on to the bottom and fasten the collar on the bedplates with the three M5 Allen screws.



- 6.** Assemble the handle by inserting the rod in the hole of the spindle. Fasten the loose ball onto the rod by hammering carefully.

Your Relief Press is now ready for use and we hope that you will enjoy working it.

Maintenance

The Norup Relief Press from TofKo has been designed to be easy to clean and requires only a minimum of maintenance.

However we furthermore recommend that you oil the spindle with acid-free oil (e.g. sewing machine oil), and then screw it up and down a few times once every month.

It is important to keep the polished surfaces clean and dry to prevent them from rusting. The press must immediately be wiped off with a clean cloth if it gets wet.

Furthermore we recommend that the press is stored in a dry place.

If the press is not used for a longer period of time, we recommend that the polished surfaces are protected by wiping it off with an oil-drained cloth.

We kindly ask you to refer to the name and the number written on the plate mounted on the press, if you need to contact us regarding the press. You can also find the information on the front page of this manual.